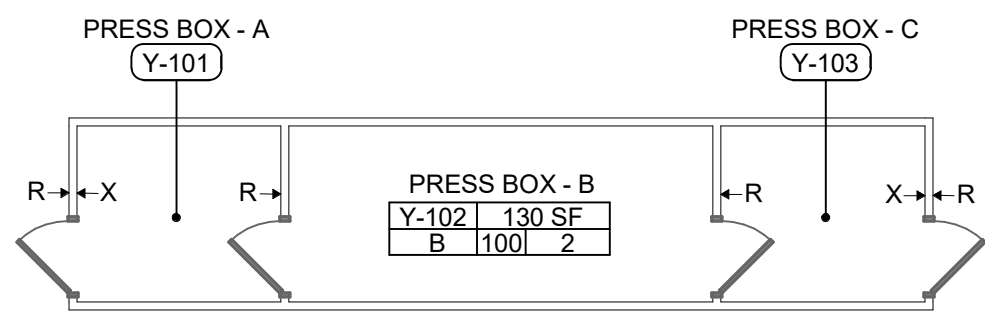
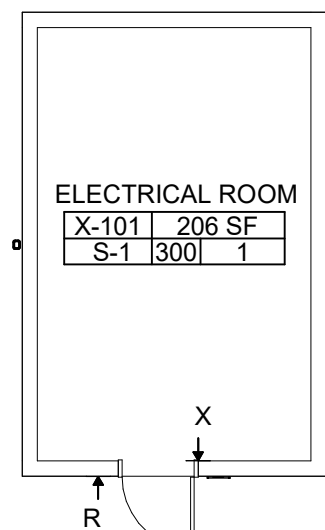


1 PARTIAL SITE PLAN Scale: 1" = 60'-0"



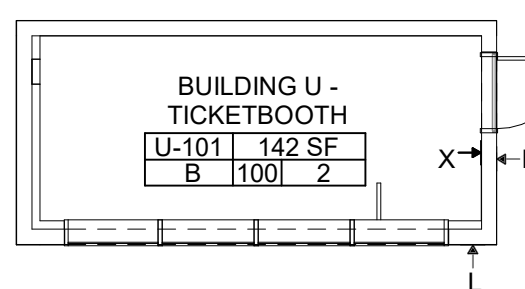
CODE ANALYSIS - BUILDING Y - PRESS BOX Scale: 1/8" = 1'-0"

CODE ANALYSIS TABULATION BUILDING Y				
ROOM NUMBER	NAME	AREA	SH-OLF	SH-Total OCC
Y-101	PRESS BOX - A	62 SF	100	1
Y-102	PRESS BOX - B	130 SF	100	2
Y-103	PRESS BOX - C	62 SF	100	1
Grand total: 3		254 SF		4



CODE ANALYSIS - BUILDING X Scale: 1/8" = 1'-0"

CODE ANALYSIS TABULATION BUILDING X				
ROOM NUMBER	NAME	AREA	SH-OLF	SH-Total OCC
X-101	ELECTRICAL ROOM	206 SF	300	1
Grand total: 1		206 SF		1



CODE ANALYSIS - BUILDING U Scale: 1/8" = 1'-0"

CODE ANALYSIS TABULATION BUILDING U				
ROOM NUMBER	NAME	AREA	SH-OLF	SH-Total OCC
U-101	BUILDING U - TICKETBOOTH	142 SF	100	2
Grand total: 1		142 SF		2

ASSISTIVE LISTENING SYSTEM AND SIGNAGE 11B-219

HEARING ASSIST SYSTEM, COMPLYING WITH CBC 11B-219 & 11B-706. THE MINIMUM NUMBER OF RECEIVERS PROVIDED FOR EACH AREA SHALL BE EQUAL TO 4% OF THE TOTAL NUMBER OF SEATS, BUT NOT LESS THAN TWO. IDENTIFY ASSEMBLY AREAS AND INDICATE THE NUMBER OF HEADSETS PROVIDED FOR EACH ROOM OR AREA. (NOTE THAT CLASSROOMS ARE CONSIDERED ASSEMBLY AREAS PER THE CHAPTER 2 DEFINITION.) PROVIDE EACH ASSEMBLY AREA WITH A SIGN WHICH INCLUDES THE SYMBOL FOR HEARING LOSS IN COMPLIANCE WITH 11B-216.10 & 11B-103.7.2.4.

HOME BLEACHERS: 5,082
 VISITOR BLEACHERS: 3,063
 TOTAL NUMBER OF SEATS: 8,145

ACCEPTABLE PRODUCTS:
 LISTEN LS-54-219
 TELEX SMP400

REQUIRED NUMBER OF RECEIVERS (4%): 328

SIGNAGE LEGEND (ALL ITEMS MAY NOT BE USED)

D	ACCESSIBLE DIRECTIONAL SIGNAGE SEE 51A/5.10
E	EXIT ROUTE SIGNAGE SEE 10/D/5.10
M	ASSISTIVE LISTENING DEVICE SIGNAGE 71A/5.10
E	MEN'S RESTROOM DOOR SIGNAGE SEE 21A/5.10
R	ROOM SIGNAGE SEE 1A/18A/5.10
A	ROOF ACCESS SIGNAGE SEE 6A/5.10
R	RESTROOM SIGNAGE SEE 21A/5.10
W	WOMEN'S RESTROOM DOOR SIGNAGE SEE 21A/5.10
O	EXIT SIGN SIGNAGE SEE 10/D/5.10
C	MAXIMUM OCCUPANCY SIGNAGE SEE 81A/5.10
F	FIRE RISER INSIDE SIGNAGE SEE 4B/5.10
R	F.A.O.P. INSIDE SIGNAGE SEE 4A/5.10
A	ADULT CHANGING ROOM SEE 1A/5.10
T	INFORMATIONAL SIGN SHALL INDICATE THE MAX. WEIGHT CAPACITY OF THE CHANGING TABLE, SEE 1A/5.10

SIGNAGE NOTES

- PROVIDE 'EMERGENCY EGRESS WINDOW' UPPER AND LOWER SIGNS AT EACH OPERABLE WINDOW PER SPECIFICATION 10 1400
- PROVIDE 'GAS SHUT-OFF VALVE' SIGNS AT ALL SITE GAS VALVES, BUILDING GAS VALVES, AND SCIENCE LAB GAS VALVES PER SPECIFICATION 10 1400.
- SEE CODE ANALYSIS PLANS FOR LOCATION OF ROOM SIGNAGE.

GENERAL ACCESSIBLE GATE NOTES:

- ENTIRE ASSEMBLY TO BE HOT DIPPED GALVANIZED AFTER FABRICATION.
- ALL WELD TO BE GROUNDED SMOOTH. NOTE: GRINDING SHALL BE DOWN BEFORE WELD INSPECTION.
- FOR GATE AND FENCE POST/FOOTING SEE DETAILS 9, 10 & 11A/5.03.
- GATES IN THE PATH OF TRAVEL SHALL BE PROVIDED WITH A SOLID KICK PLATE, 10" HIGH AND 3" MAX. FROM THE WAVEMENT ON BOTH SIDE.
- MAXIMUM EFFORT TO OPERATE DOORS SHALL NOT EXCEED 5 LBS. SUCH PULL OR PUSH EFFORT BEING APPLIED AT RIGHT ANGLE.
- GATE CLOSING SPEED SHALL COMPLY WITH CBC 11B-404.2.8. GATE CLOSER SHALL BE ADJUSTED SO THAT FROM AN OPEN POSITION OF 90 DEGREES, THE TIME REQUIRED TO MOVE THE GATE TO A POSITION OF 12 DEGREES FROM THE LATCH IS 5 SECONDS MINIMUM.
- MANUAL DOORS AND DOORWAYS AND MANUAL GATES INTENDED FOR USER PASSAGE SHALL COMPLY WITH SECTION 11B-404.2.

GATE HARDWARE GROUP A1 (DOUBLE GATE):

- EXIT DEVICE: TOUCH BAR EXIT DEVICE (PANIC HARDWARE); VGN DUPRIN 98-NIL, ED5200, OR EQUAL; WITH PULL HAND TRIM, NIGHT LATCH FUNCTION MOUNTED ON INTERIOR SIDE OF GATE; OFFSET PULL HANDLE ON EXTERIOR SIDE OF GATE WITH MORTISE LOCK.
- GATE CLOSER: LOCINOX MAMMOTH 180 LOCINOX, OR EQUAL CHAIN LINK BRACKETS FOR MAMMOTH
- WELDABLE GATE BOX: K-BAMOR2, BY KEDEX INC.

GATE HARDWARE GROUP A2 (SINGLE GATE):

- EXIT DEVICE: TOUCH BAR EXIT DEVICE (PANIC HARDWARE); VGN DUPRIN 98-NIL, ED5200, OR EQUAL; WITH PULL HAND TRIM, NIGHT LATCH FUNCTION MOUNTED ON INTERIOR SIDE OF GATE; OFFSET PULL HANDLE ON EXTERIOR SIDE OF GATE WITH MORTISE LOCK. SEE SPECIFICATIONS.
- DOOR CLOSER: LOCINOX MAMMOTH 180 LOCINOX, OR EQUAL CHAIN LINK BRACKETS FOR MAMMOTH
- WELDABLE GATE BOX: K-BAMOR2, BY KEDEX INC.

GATE HARDWARE GROUP B1 (GATE W/ PAD LOCK):

- EXIT DEVICE: CUTOUT FOR CHAIN & LOCK (CHAIN & PAD LOCK DISTRICT FURNISHED)
- DOOR CLOSER: LOCINOX MAMMOTH 180 LOCINOX, OR EQUAL CHAIN LINK BRACKETS FOR MAMMOTH
- WELDABLE GATE BOX: K-BAMOR2, BY KEDEX INC.

GATE HARDWARE GROUP C1 (GATE W/ KNOX BOX):

- EXIT DEVICE: LOCKABLE LEVER W/ MORTISE LOCK KNOX BOX
- GATE CLOSER: LOCINOX MAMMOTH 180 LOCINOX, OR EQUAL CHAIN LINK BRACKETS FOR MAMMOTH
- WELDABLE GATE BOX: K-BAMOR2, BY KEDEX INC.

GATE HARDWARE GROUP D1 (SLIDING GATE):

- TRACK: (2) V-TRACK 30" (2) V-GROOVE PWR WHEEL 4 QTY
- GATE LOCK: ISLH 100 SCH GATE LOCK
- WHEELS: GR6 CT PLFDB GUIDE WHEELS

PLAN LEGEND

---	PATH OF TRAVEL
---	3 HR WALLS
---	2 HR WALLS
---	1 HR WALLS; 60 MINUTE OPENINGS OCCUPANCY SEPARATION
---	1 HR WALLS; 20 MINUTE OPENINGS OCCUPANCY SEPARATION
---	CONSTRUCTION CAPABLE OF RESISTING PASSAGE OF SMOKE



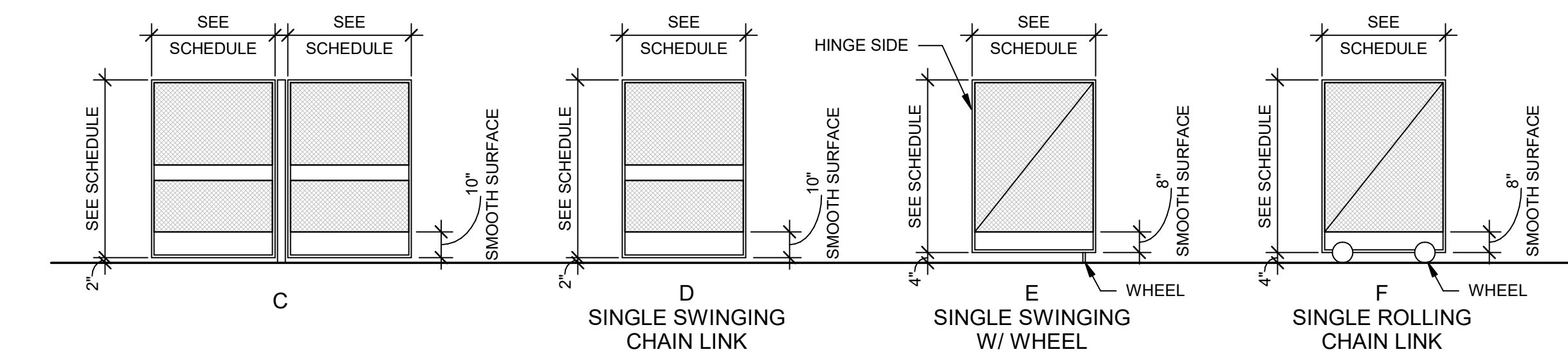
ACCUMULATED OCCUPANT LOAD FROM ROOMS DIRECTLY INTO CORRIDOR OR EXIT



EXIT FROM ROOMS. NUMBER INDICATES THE CALCULATED ACCUMULATED LOAD AT THAT ROOM OR BUILDING EXIT. ARROW INDICATES EXIT DIRECTION.

ROOM NAME	AREA
A101	150 SF
X	100 L 00

OCCUPANT LOAD
 OCCUPANT LOAD FACTOR - TABLE 1004.1.2
 OCCUPANCY



GATE TYPE

Scale: 1/4" = 1'-0"

GATE SCHEDULE									
DOOR NO	PR	DOOR LEAF A	DOOR LEAF B	DOOR HT	TYPE	DOOR MATERIAL	HARDWARE GROUP	REMARKS / CODED NOTES	DOOR NO
G1	PR	4'-0"	4'-0"	6'-0"	C	CHAINLINK	A1	SEE DETAIL 9A/5.03	G1
G2	PR	4'-0"	4'-0"	6'-0"	C	CHAINLINK	A1	SEE DETAIL 9A/5.03	G2
G3	PR	4'-0"	4'-0"	6'-0"	C	CHAINLINK	A1	SEE DETAIL 9A/5.03	G3
G4	PR	4'-0"	4'-0"	6'-0"	C	CHAINLINK	A1	SEE DETAIL 9A/5.03	G4
G5	PR	4'-0"	4'-0"	6'-0"	C	CHAINLINK	A1	SEE DETAIL 9A/5.03	G5
G6	PR	4'-0"	4'-0"	6'-0"	C	CHAINLINK	A1	SEE DETAIL 9A/5.03	G6
G7	PR	4'-0"	4'-0"	6'-0"	C	CHAINLINK	A1	SEE DETAIL 9A/5.03	G7
G8	PR	4'-0"	4'-0"	6'-0"	C	CHAINLINK	A1	SEE DETAIL 9A/5.03	G8
G9	PR	4'-0"	4'-0"	6'-0"	C	CHAINLINK	A2	SEE DETAIL 9A/5.03	G9
G10	PR	4'-0"	4'-0"	6'-0"	C	CHAINLINK	A2	SEE DETAIL 9A/5.03	G10
G11	PR	5'-3"	5'-3"	10'-0"	C	CHAINLINK	B1	SEE DETAIL 9A/5.03	G11
G12	PR	4'-0"	4'-0"	6'-0"	D	CHAINLINK	A1	SEE DETAIL 11A/5.03	G12
G13	PR	4'-0"	4'-0"	6'-0"	D	CHAINLINK	C1	SEE DETAIL 11A/5.03	G13
G14	PR	4'-0"	4'-0"	6'-0"	D	CHAINLINK	A1	SEE DETAIL 10A/5.03	G14
G15	PR	4'-0"	4'-0"	10'-0"	D	CHAINLINK	A1	SEE DETAIL 10A/5.03	G15
G16	PR	4'-0"	4'-0"	10'-0"	D	CHAINLINK	A1	SEE DETAIL 10A/5.03	G16
G17	PR	4'-0"	4'-0"	10'-0"	D	CHAINLINK	A1	SEE DETAIL 10A/5.03	G17
G18	PR	10'-0"	10'-0"	10'-0"	D	CHAINLINK	B1	SEE DETAIL 9A/5.03	G18
G19	PR	4'-0"	4'-0"	10'-0"	D	CHAINLINK	B1	SEE DETAIL 11A/5.03	G19
G20	PR	6'-4"	6'-4"	6'-0"	E	CHAINLINK	B1	SEE DETAIL 9A/5.03	G20
G21	PR	4'-0"	4'-0"	6'-0"	D	CHAINLINK	B1	SEE DETAIL 11A/5.03	G21
G22	PR	4'-0"	4'-0"	6'-0"	D	CHAINLINK	B1	SEE DETAIL 11A/5.03	G22
G23	PR	15'-0"	6'-0"	6'-0"	F	CHAINLINK	D1	SEE DETAIL 11A/5.03	G23
G24	PR	4'-0"	4'-0"	6'-0"	D	CHAINLINK	A1	SEE DETAIL 11A/5.03	G24
G25	PR	4'-0"	4'-0"	6'-0"	D	CHAINLINK	A1	SEE DETAIL 11A/5.03	G25
G26	PR	4'-0"	4'-0"	6'-0"	D	CHAINLINK	B1	SEE DETAIL 11A/5.03	G26
G27	PR	4'-0"	4'-0"	6'-0"	D	CHAINLINK	B1	SEE DETAIL 9A/5.03	G27
G28	PR	4'-0"	4'-0"	6'-0"	D	CHAINLINK	A1	SEE DETAIL 9A/5.03	G28